



# **TM/TX/TC Series** *Temperature instruments*



Huge stock and spare parts in coverage for our clients' order



TM Series - (ECD) External Calibration Device for in-field calibration function



Selectable in Single or Dual Unit measurement range



## **TM Series** Bimetal Thermometer

- Accuracy class 1.6, \*Class 1.0
- Dial size 3", 4", 5" and 6"
- Index Protection rating IP 65
- Temperature range -40°..+60° to 0..600°C
- External Calibration Device (ECD)
- Bottom, back and everyangle mounting
- Sliding connection/Compression fitting
- Liquid fillable\* for vibration application
- Sensor length from 2½" up to 50"
- Design material :
  - Case - SS304 / SS316
  - Wetted part - SS316
  - Window - Instrument / Safety glass



## **TS Series** Sanitary Bimetal Thermometer

- Accuracy class 1.6
- Dial size 3", 4", 5" and 6"
- External Calibration Device (ECD)
- Index Protection rating IP 66
- Temperature range -40°..+60° to 0..600°C
- Bottom mount with tri-clamp®, size 1½" to 3"
- Liquid fillable\* for vibration application
- Sensor length from 2½" up to 36"
- Design material :
  - Case - SS304 / SS316
  - Wetted part - SS316
  - Window - Instrument / Safety glass



## **TX Series** Gas Capillary Thermometer

- Accuracy class 1.6, \*Class 1.0
- Dial size 3", 4", 5", 6" and 10"
- Index Protection rating IP 65
- Temperature range -40°..+60° to 0..650°C
- Remote capillary up to 30 meters
- Bottom and back mounting with flange
- Sliding connection/Compression fitting
- Liquid fillable\* for vibration application
- Sensor length from 2½" up to 60"
- Design material :
  - Case - SS304 / SS316
  - Wetted part - SS316
  - Window - Instrument / Safety glass

## **TXE Series** Gas Capillary Thermometer

- Accuracy class 1.6, \*Class 1.0
- Dial size 3", 4", 5", 6" and 10"
- Index Protection rating IP 65
- Temperature range -40°..+60° to 0..800°C
- Remote capillary up to 30 meters
- Bottom and back mounting with flange
- Sliding connection/Compression fitting
- Liquid fillable\* for vibration application
- Sensor length from 2½" up to 60"
- Design material :
  - Case - SS304 / SS316
  - Wetted part - SS316
  - Window - Instrument / Safety glass



## **Contact Specification**

- Minimal range 60°C
- Connector cable junction box
- Hysteresis maximal 1% up and down
- Setpoint(s) from outside with key
- SPDT and DPDT contact type
- Inductive contact, please \*consult
- Electrical switch capacity
  - 125 VAC : 5A (Ind. load 0.1A)
  - 250 VAC : 3A (Ind. load 0.1A)
  - DC 30V : 5A (Ind. load 0.1A)
  - DC 125V : 0.4A
  - DC 250V : 0.2A



# TW Series Thermowell



Thermowell  
Material

Various SS and exotic materials.  
Selected from the best in its class.

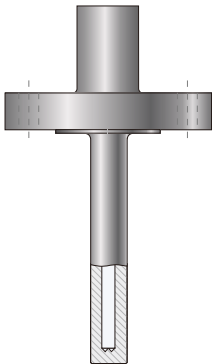


Wide Range  
Flange Sizes

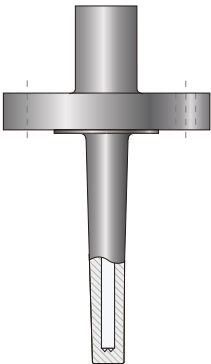
Wide selection flange size and rating  
following DIN EN1092-1, ASME B16.5,  
JIS B2220 or other standard.

## Flanged

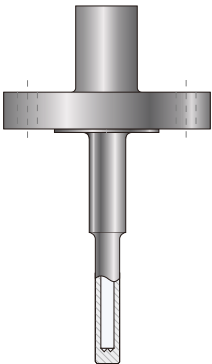
## Drill Bar Stock



TW-F11 Straight flanged

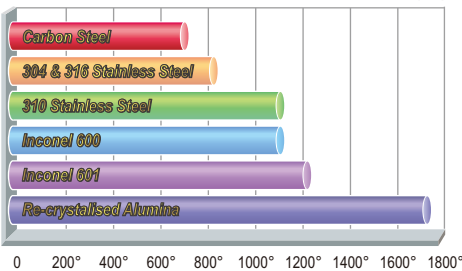


TW-F12 Tapered flanged



TW-F13 Stepped flanged

## Material Temperature Resistance Reference (°C)



## TW-F10 Series Flanged Thermowell

- Flanged per ASME B16.5, DIN EN1092-1 or JIS
- Thermowell styles Straight, Stepped or Tapered
- Flanged thermowell with full penetration weld
- Solid drill bar stock metal machining
- Various flange and bar stock material selection
- Wake Frequency Calculation (PTC 19.3TW)
- Various medium and heavy duty application
- Custom design according to project requirement

## Threaded

## Pipe Threaded

## Pipe & Drill Bar Stock

## Threaded



TW-P10 Pipe threaded



TW-T11 Straight threaded



TW-T12 Tapered threaded



TW-T13 Stepped threaded

This is the property of 3S INTERNATIONAL, PT and may not be used, reused, modified or reproduced without prior permission. Specification and material are subjected to changes or modification without prior notice.



**Thermowell  
Material**

Various SS and exotic materials.  
Selected from the best in its class.



**Wide Range  
Flange Sizes**

Wide selection flange size and rating  
following DIN EN1092-1, ASME B16.5,  
JIS B2220 or other standard.

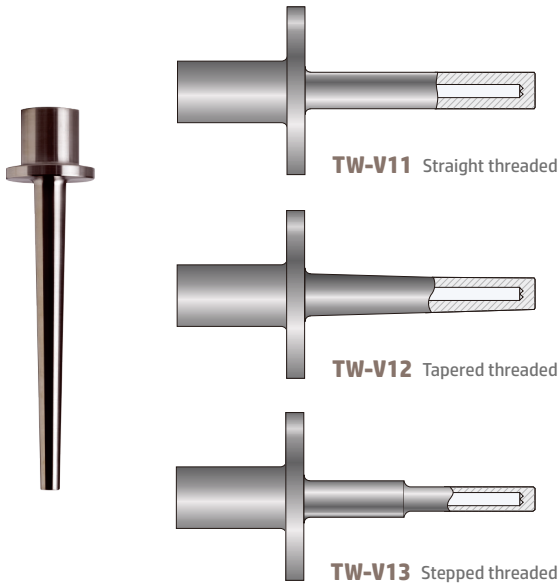


**Thermowell  
Calculation**

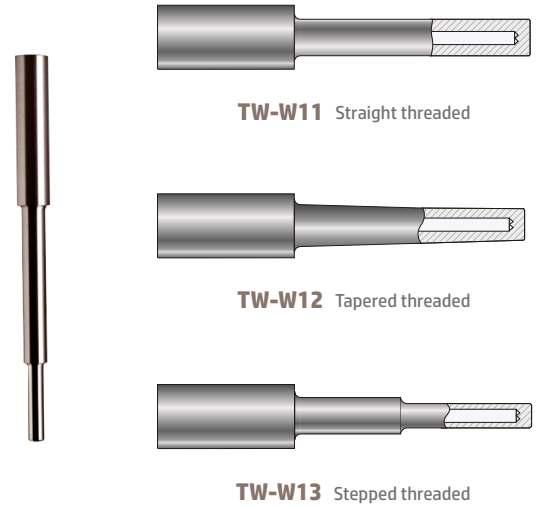
PTC 19.3 TW Thermowell Calculation



## Van Stone



## Socket Weld



## Sanitary



## Weld-In

